



Savage Enterprises

Sample 240-071521-110

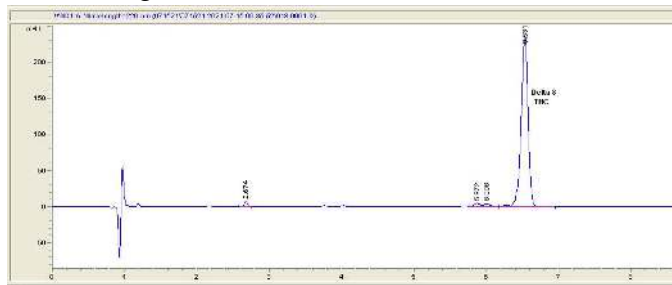
Gelato

Sample Submitted: 07-15-2021; Report Date: 07-16-2021

Gelato

Distillate

Chromatogram



Cannabinoid Profile



Cannabinoid Profile by HPLC

0.00%
Calculated THC Yield

0.00%
Calculated CBD Yield

91.14%
Total Cannabinoids

Cannabinoid	% wt	mg/g
Delta-8-THC	91.14	911.4
THC	0.0	0.0
Total Cannabinoids	91.14	911.4
Calculated THC Yield	0.00	0.00
Calculated CBD Yield	0.00	0.00

Calculated Maximum THC Yield = THC + 0.877 * THCA
 Calculated Maximum CBD Yield = CBD + 0.877 * CBDA

Marin Analytics, LLC
 250 Bel Marin Keys Blvd, Suite D4
 Novato, CA 94949
 415-936-6477 / sarabiancalana1@gmail.com

Sara Biancalana
Sara Biancalana
 Chief Scientist

This sample has been tested by Marin Analytics, LLC using valid testing methodologies and a quality system. Values reported relate only to the sample tested. Marin Analytics, LLC makes no claims as to the efficacy, safety or other risks associated with any detected or non-detected levels of any compounds reported herein. This Certificate shall not be reproduced except in full, without the written approval of Marin Analytics, LLC.

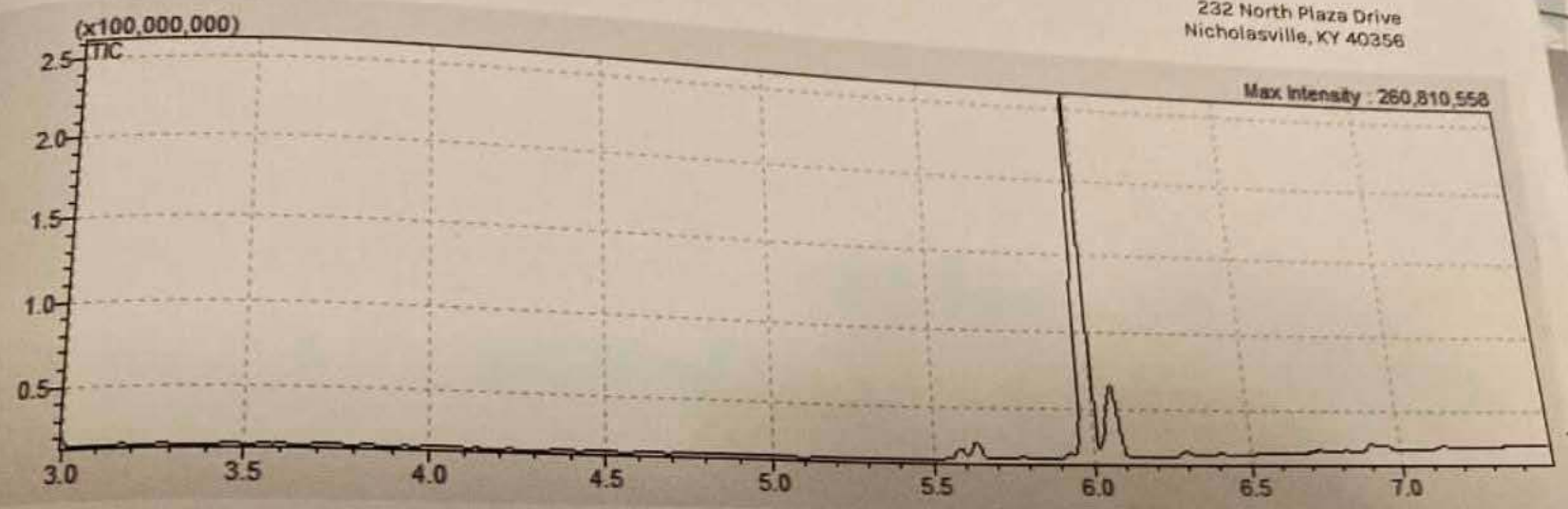


Figure 15. Sample 2320 fortified with delta-9-THC-Acetate as a retention marker.

Conclusions

GC-MS analysis and spectral library matching indicated that samples SA-06182021-2319 and SA-06182021-2320 submitted by Pur IsoLabs contain Δ^8 -THC-acetate. Minor amounts of Δ^8 -THC and Δ^9 -THC were also detected in the sample.

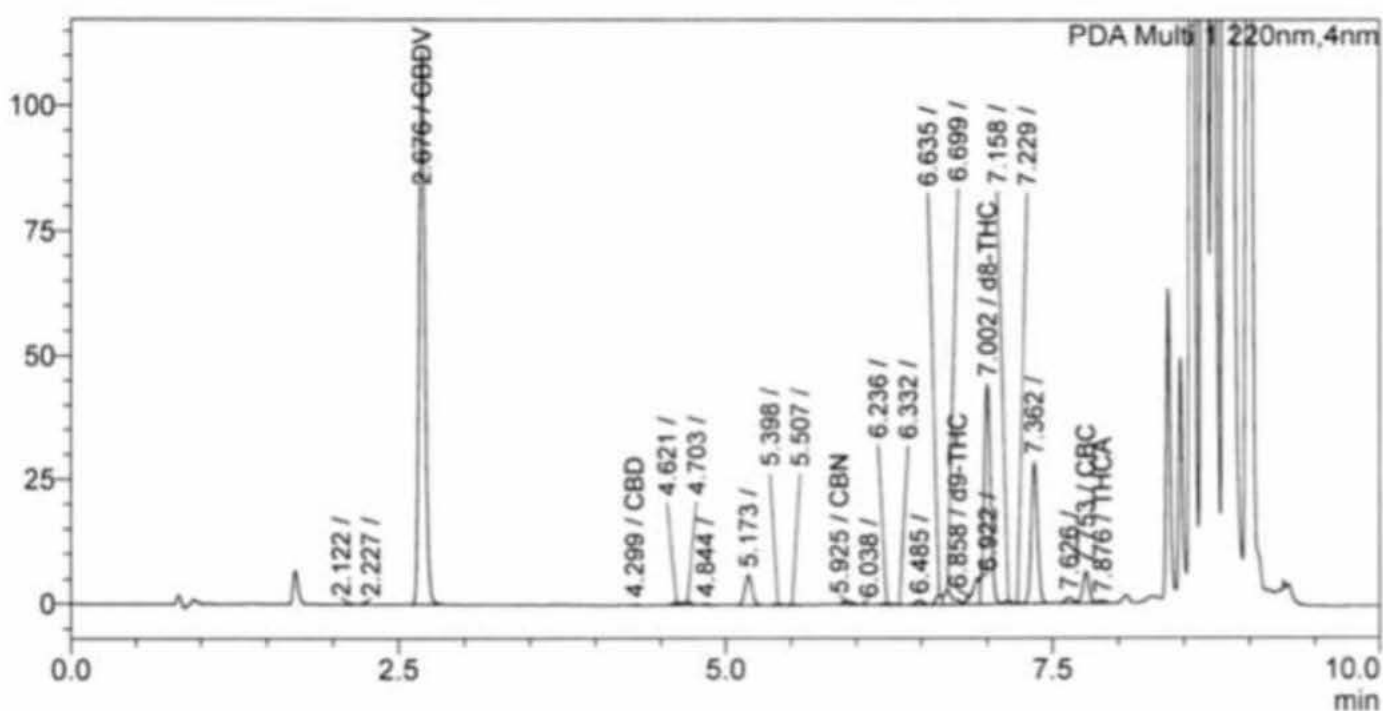
Due to the unavailability of a certified reference standard of Δ^8 -THC-acetate, it was not possible to quantify the amount of Δ^8 -THC-acetate in the sample. However, the area of the peak attributed to Δ^8 -THC-acetate in the HPLC-PDA analysis of sample SA-06182021-2319 (Pur Infinite - THC-O) represented 78.10% of results and sample SA-06182021-2320 (THC-O Nano 10%) 82.58%.

82.58%
8.258%

Analysis Report

Sample Name : KN10412011-001POT
 Sample ID : KN10412011-001POT
 Data Filename : KN10412011-001POT_4122021_005.lcd
 Method Filename : CAL.POT.0402x041221a.lcm
 Batch Filename : 041221x719.lcb
 Date Acquired : 4/12/2021 8:44:16 PM
 Sample Amount : 0.2202
 Dilution : 0.004
 Acquired by : System Administrator

mAU



PDA Ch1 220nm

Peak#	Ret. Time	Area	Conc.	Unit	Name
3	2.676	343365	0.48980	%	CBDV
4	4.299	306	0.00093	%	CBD
11	5.925	3260	0.00369	%	CBN
18	6.858	874	0.00194	%	d9-THC
20	7.002	151165	0.27467	%	d8-THC
25	7.753	21302	0.03298	%	CBC
26	7.876	1948	0.00421	%	THCA
Total		522220			